



WELCOME!

Bahama Glen Apartments is the most desired and affordable community at the heart of Dallas, Texas. Bordered by I-30 and LOOP 12, it grants quick access to the cities of Arlington, Duncanville, Grand Prairie, Coppell, Mequite, and Grapevine as well as a myriad of fine dining, shopping, entertainment and Dallas ISD.

This stunning lifestyle hosts a pet-friendly community with large inviting homes, high-end amenities and renovated apartment features* that is just 30 minutes from DFW International Airport and so much more!

Once you take a tour and meet our professional and friendly staff, you will be ready to call Bahama Glen your **home**.

COMMUNITY AMENITIES

- 30 minutes away from DFW International Airport
- 24-Hour emergency maintenance
- Close to fine dining, great shopping and entertainment venues such as American Airlines Center, Steven's Park Golf Course, Dallas Farmers Market, Bishop Arts District and much more!
- On DART bus route
- Manicured landscaping
- Pet-friendly community
- Quick access to major thoroughfares
- Reserved covered parking
- Resort-style swimming pools

APARTMENT FEATURES

- 2-inch faux wood blinds
- Cable ready
- Ceiling fans
- Covered parking
- Dishwashers
- Double stainless-steel sinks
- Fireplace accent lighting
- Garbage disposals
- Kitchen pantries
- Large counter top space
- Linen closets
- Microwaves
- Spacious walk-in closets
- Washer and dryer connections
- Wood-burning fireplaces

ALL SQUARE FOOTAGE IS APPROXIMATE AND IS SUBJECT TO CHANGE. APARTMENT FEATURES MAY VARY BY UNIT. *ONLY IN SELECT UNITS



DIRECTIONS: TAKE I-30 W. TO HAMPTON RD. TAKE **EXIT 42** AND KEEP LEFT AT THE FORK FOLLOWING SIGNS FOR **N HAMPTON RD. S** TURN RIGHT ONTO **N PLYMOUTH RD.** THEN TURN RIGHT ON **BAHAMA DR.** WE ARE LOCATED ON THE RIGHT.

2540 Bahama Drive, Dallas, TX 75211
TEL (214) 946-0744
FAX (214) 943-6736

E info.bahamaglenapartments@wmci.biz

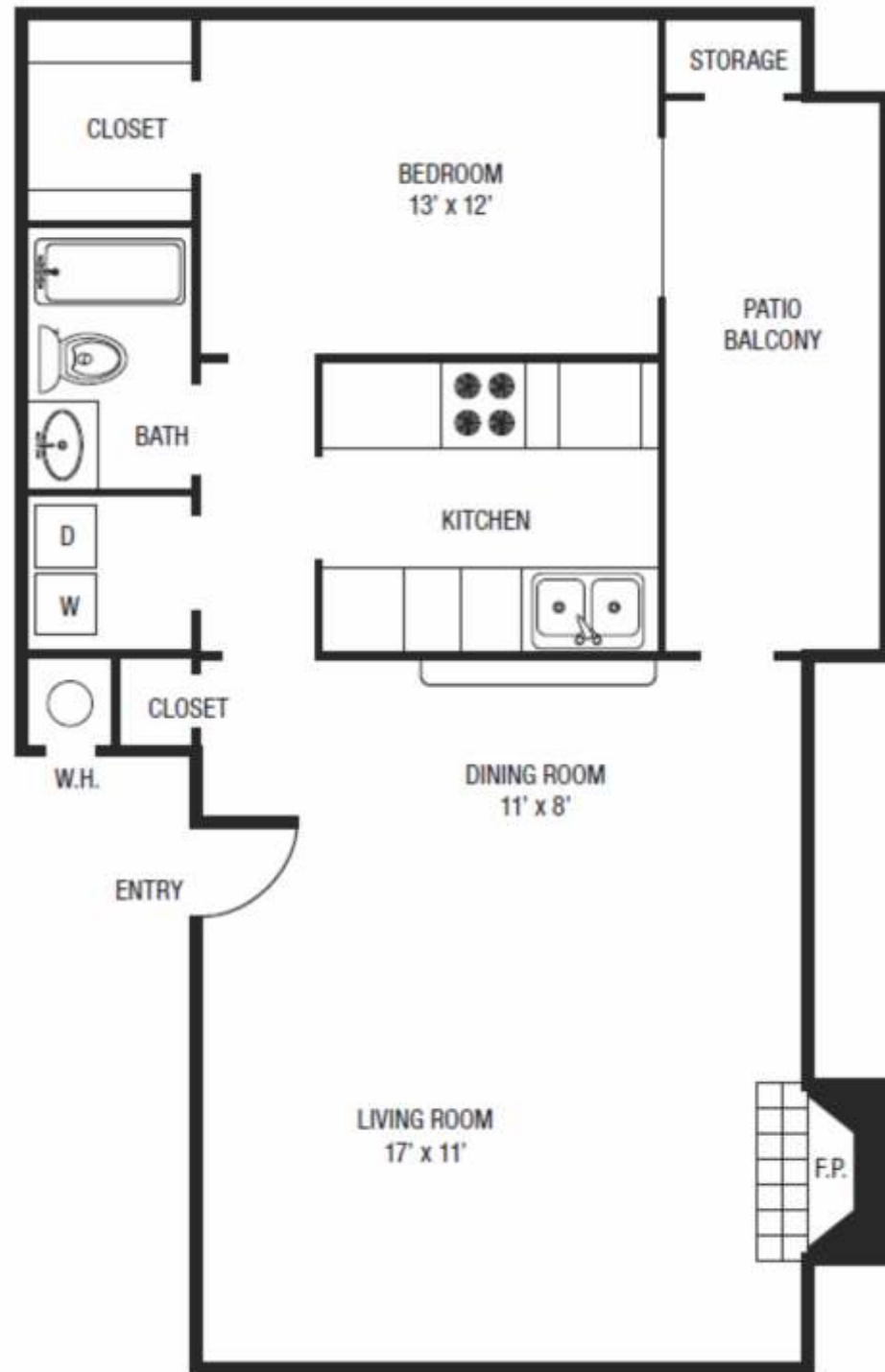
WWW.BAHAMAGLEN.COM

A **GREAT** PLACE TO CALL **HOME**



BAHAMA GLEN
APARTMENTS





Bahama Glen A4

One Bedroom, One Bath
789 Square Feet*

*All square footage is approximate only